

GOZZO 45



apreamare.it


apreamare
MEDITERRANEAN YACHTING CULTURE



NEW GOZZO 45 MAIN FEATURES

- Head-turning design with strong personality
- Genuine walk-around: no steps, large side-walks, high bulwarks
- Best in class liveability inside/outside with wider beam and 24mq cockpit
- Driving seats x 4 with integrated wet-bar, table for 8/10 guests
- 2 x generous sun-pads plus bow lounge
- Vast beach-area with hi/low platform
- 2 or 3 cabins, 2 heads + dinette with L-shape sofa
- Great marine attitude: seakeeping, stability and comfort
- Highest level of customization on the market





















GOZZO 45







INTERIOR







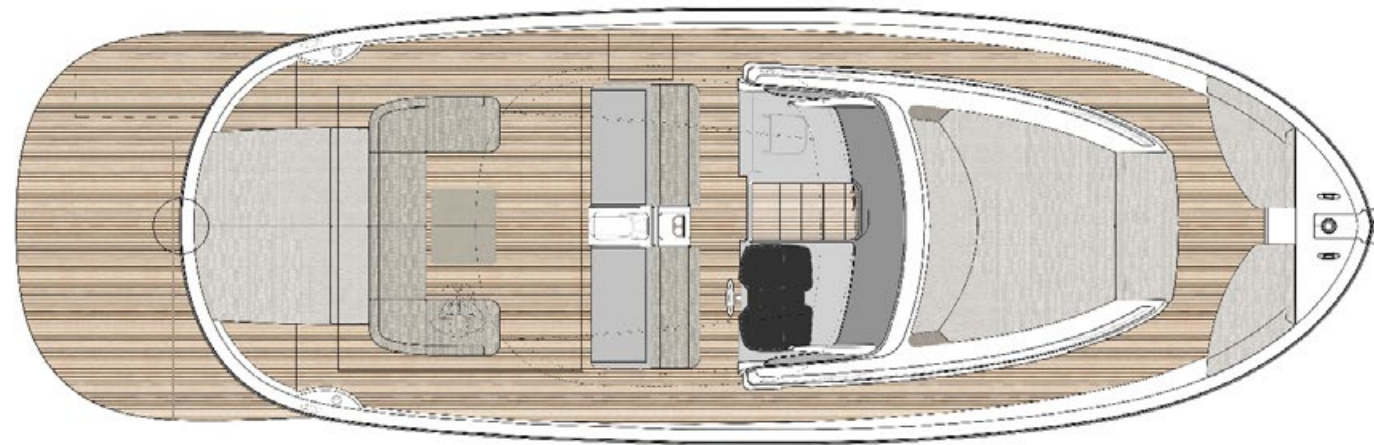




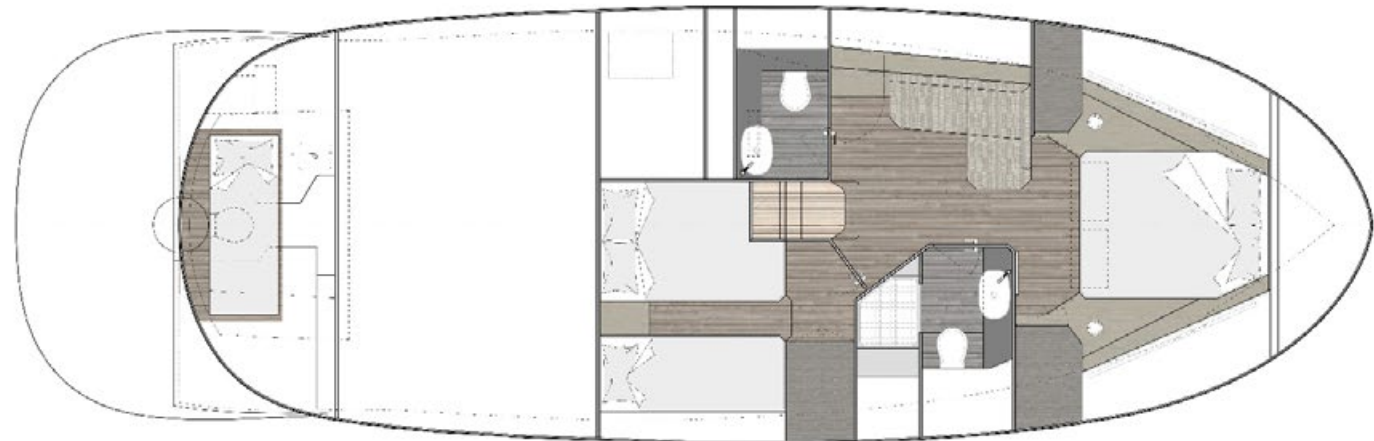




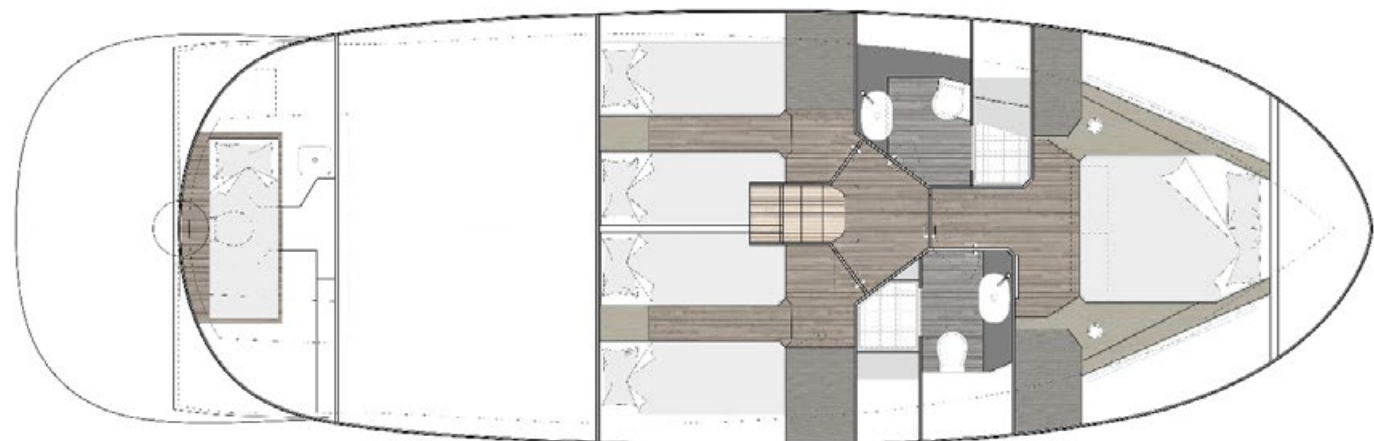




Standard layout



Optional layout



PRELIMINARY TECHNICAL DATA

1 ENGINES

2* CUMMINS QSC8,3 600 mhp/441kW at 3000 rpm	STD
2 * VOLVOPENTA IPS 1 - 650 435 mhp / 320 kw at 3700 g/min	OPT

2 SPEED (knots)

	QSC8.3 600		VP IPS 650
Maximum speed at medium load displacement	30	knots	33
Cruising speed at medium load displacement	25	knots	27

3 RANGE (nautical miles)

	QSC8.3 600		VP IPS 650
Maximum speed	192	n.m.	278
Cruising speed	241	n.m.	350

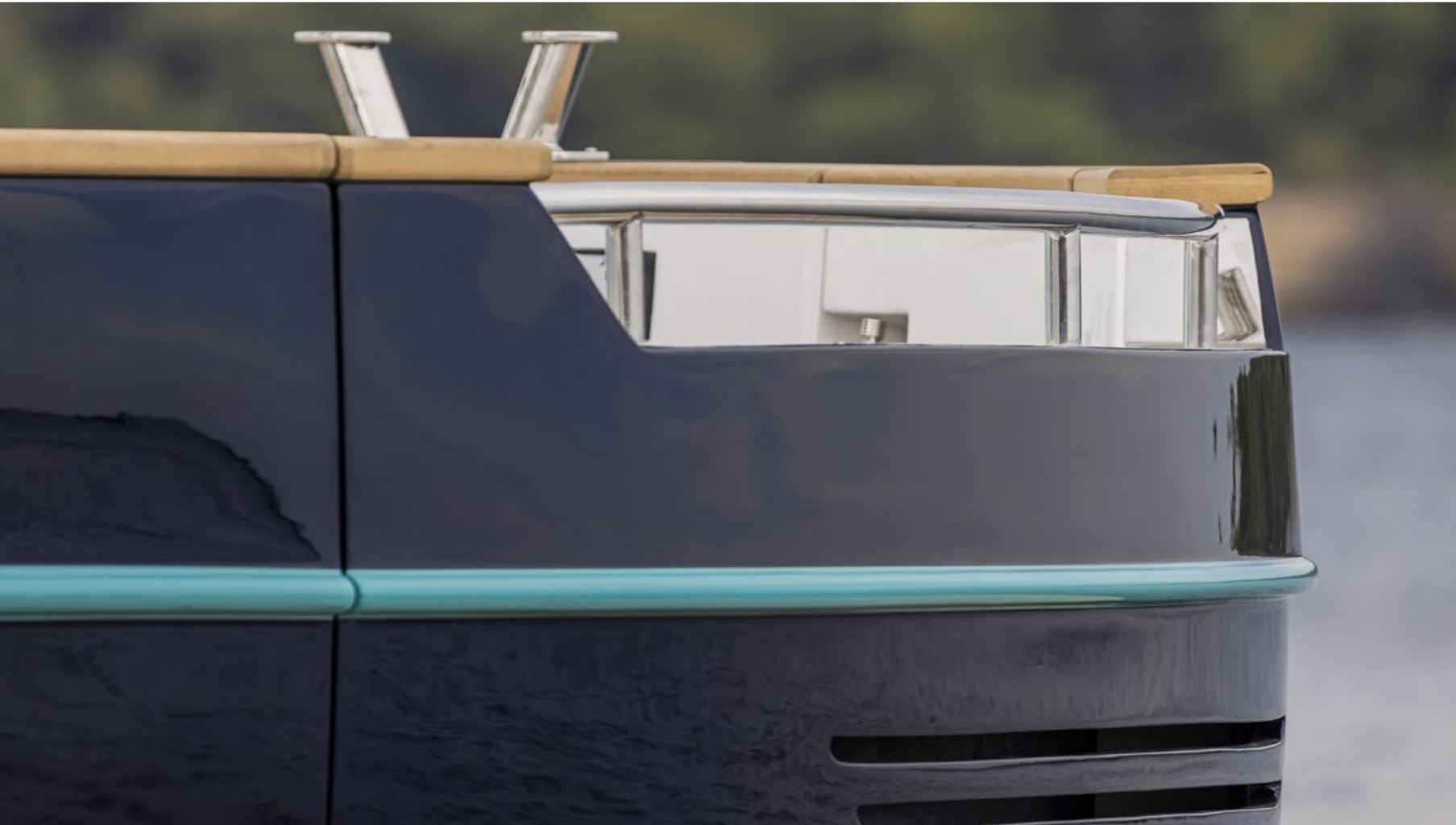
4 MAIN SIZES

Loa = overall length (standard ISO 8666)	14,70	m.	48 ft. 3 in.
Lh = Hull length (standard ISO 8666)	13,00	m.	42 ft. 8 in.
Lg = waterline length (boat fully laden)	12,55	m.	41 ft. 2 in.
Max. beam	4,70	m.	15 ft. 5 in.
Depth under propellers (boat fully laden)	1,20	m.	3 ft. 11 in.
Displacement unladen	15,9	ton./lb.	35053
Displacement laden	19,0	ton./lb.	41888
Max.number of persons on board	16		
Navigation category CE 2003/44	B		
Certification modules	B		

5 TECHNICAL DATA

Hull type :	deadrise . Warped hull with spray rails		
H t = Minimum transport height under propellers	4,75	m.	15 ft. 7 in.
Fuel tank capacity	1600	lt./US gals.	423
Fresh water tank capacity	350	lt./US gals.	92
Black water tank capacity	77	lt./US gals.	20

Technical data, performance and range figures, designs and graphic reproductions contained herein have no certification value. They are purely descriptive and refer to standard models. Actual technical or descriptive specifications must be provided solely with regards to the craft being purchased. Therefore, any indications will be binding for the seller only if contained in the sales contract and in the relevant manual







Via Terragneta, 72
80058 Torre Annunziata (NA)
Tel: +39 081 537 8411
info.apreamare@apreamare-yacht.com

www.apreamare.it